

# 中 鉸 股 份 有 限 公 司

**CREMAX TECH. CO., LTD.**

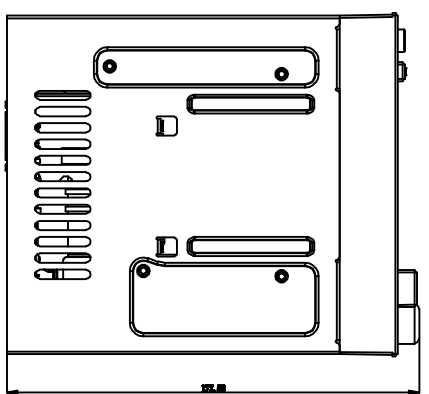
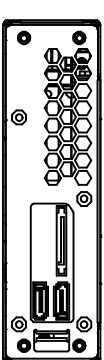
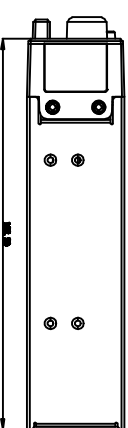
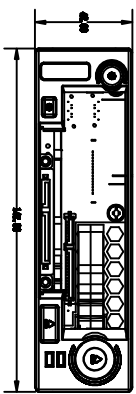
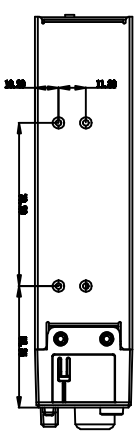
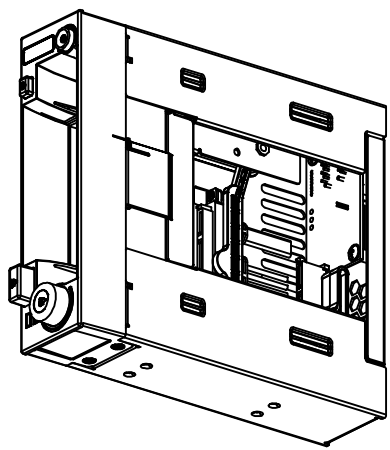
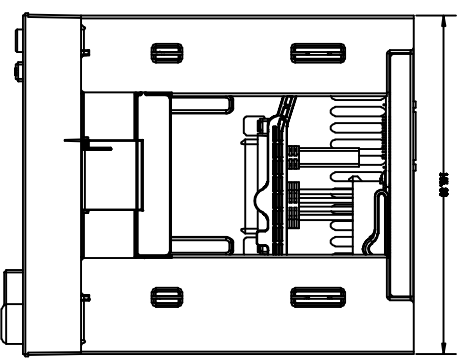
## 產 品 規 格 承 認 書

**Product Sheets for Approval**

**Model: MB971SP-B**

<b>1. Product Dimension.....</b>	<b>1</b>
<b>2. Specification &amp; Benefit.....</b>	<b>2</b>
<b>3. Test Reports.....</b>	<b>3-17</b>
<b>4. CE Approval.....</b>	<b>18</b>

Doc. No:	71110110	Audited by	Checked by		Drafted by
Issued Date	2012.01.06		PM/Sales	RD	Huangweie
Edition	V1.0				



APPLIED MODEL

CREMAX TECH CO., LTD.

TITLE	MB971SP-B_全组立	TOLERANCES	±0.20 ±0.10 ±0.05 ±0.05
DESIGN	李子衡	DATE	2011/05/04
CHECKED		DATE	
APPROVED		DATE	

FINISHED	SCALE	1:1
PART NO.	UNIT	REV.
DWG. NO.	MM	1.0
SHEET	1 OF 1	

# Screw-less 2.5 " & 3.5 " in 1 Module Tray

**ICY DOCK™**

## MB971SP-B Series



### Features

- For 1 standard 5.25" Half-height expansion bay.
- Support 2 standard 2.5" & 3.5" height SATA HDD.
- Power LED indicator.
- HDD access LED indicator.

### Technical data

<b>Model</b>	MB971SP-B
<b>Colour</b>	black
<b>HDD interface</b>	2.5" SSD/SATA HDD x 1 & 3.5" SATA HDD x 1
<b>Host interface</b>	SATA to SATA
<b>Front Panel</b>	2.5"/3.5" HDD Independent, Power on/off button & Eject Button
<b>Device Space</b>	5.25" Half height device x 1
<b>Available SATA HDD</b>	2.5" SATA/SSD HDD x 1 & 3.5" SATA II HDD x 1
<b>DC Socket Number</b>	15 Pin SATA power connector x 1
<b>Cooling Fan</b>	NO
<b>Power Indicator</b>	Green LED (Power On )
<b>HDD Access Indicator</b>	Orange LED flashing(2.5"/3.5" HDD Independent LED signals)
<b>RAID function</b>	NO
<b>Key lock</b>	NO
<b>Hot Swap</b>	YES
<b>Material</b>	Plastic+Metal(SECC)
<b>Dimension (W x H x D)</b>	145.8*42*177.5mm
<b>Weight</b>	621g

中鉸股份有限公司  
深圳船舶中鉸五金電子廠  
**验证部**  
**产品测试报告**

机种：MB971SP-B

P.C.B.：200206

PCB 版本：1.0

Doc. No:	ER711101	Audited by	Checked by		Drafted by
Issued Date	2012.01.06		PM/Sales	RD	Huangweie
Edition	V1.0				

I. 测试机型外观



正面



背面



侧面

Engineering Director:

Engineer:

## II. 总结摘要

说明:

Pass : 测试全部通过则判定为 Pass

Fail : 测试有一项异常则判定为 Fail

Limitation: 仅不符合人性化操作, 无关安全性、稳定性或搭配性问题, 可有条件接受则判定为 Limitation

Skip : 因测试环境或仪器限制无法测试, 则判定为 Skip

N/A : 由于测试机硬件限制或硬件无该项功能, 则判定为 N/A

### 各项验证结果:

	验证项目		查验结果	说明
1. 电子性能测试	1.1	开关功能测试	Pass	
	1.2	灯号显示功能测试	Pass	
	1.3	Hot swap 功能测试	Pass	
	1.4	S. M. A. R. T 功能测试	Pass	
	1.5	传输稳定性测试	Pass	
	1.6	电子负载测试	Pass	
	1.7	SATA II 速率测试	Pass	
	1.8	SATAIII 速率测试	Pass	
	1.9	Sleep 功能测试	Pass	
	1.10	大容量资料拷贝测试	Pass	
	1.11	硬碟相容性测试	Pass	
	1.12	OS 相容性测试	Pass	
	1.13	OVER 2TB/3TB 测试	Pass	
2. 机械性能测试	2.1	外观结构检查	Pass	
	2.2	外形尺寸测量	Pass	
	2.3	导光柱的导光效果测试	Pass	
	2.4	硬碟 & 机箱安装验证	Pass	
	2.5	外壳接地验证	Pass	
	2.6	温升测试	Pass	
3. 环境特性测试	3.1	高温工作测试	Pass	
	3.2	低温工作测试	Pass	

Engineering Director:

Engineer:

目录

I. 测试机型外观.....	1
II. 总结摘要.....	2
※仪器设备.....	4
1. 电子功能测试.....	5
1.1 开关功能测试.....	5
1.2 灯号显示功能测试.....	5
1.3 Hot swap 功能测试.....	5
1.4 S. M. A. R. T 功能测试.....	5
1.5 传输测试.....	6
1.6 SATA II 速率测试.....	6
1.7 SATAIII速率测试.....	6
1.8 电子负载测试.....	6
1.9 Sleep 功能测试.....	7
1.10 大容量资料拷贝测试.....	7
1.11 硬盘相容性测试.....	7
1.12 操作系统相容性测试.....	7
1.13 OVER 3TB/2TB 测试.....	8
2. 机械性能测试.....	8
2.1 外观、结构检查.....	8
2.2 外形尺寸测量.....	9
2.3 导光柱的导光性验证.....	9
2.4 硬盘与机箱安装验证.....	9
2.5 外壳接地验证.....	9
2.6 温升测试.....	9
3.环境特性测试.....	10
3.1 高温工作测试.....	10
3.2 低温工作测试.....	10
4. 附件.....	10
4.1 灯号显示图片.....	10
4.2 S. M. A. R. T 功能测试截图.....	10
4.3 SATA II 速率测试截图.....	11
4.4 SATAIII 速率测试截图.....	12
4.5 大容量资料拷贝测试截图.....	13
4.6 产品实装图片.....	14

Engineering Director:

Engineer:

## ※仪器设备

### PC 1 配置:

Testing	Motherboard Model name	ASUS P5Q3	Chipset	Intel®P45/ICH10R Chipset
	BIOS Version	V0609		
PC 1	CPU	Pentium® Dual-Core CPU E5200@2.50GHz, 2.50GHz	Memory	Kingston DDR3 1333MHz, 2GB
	OS	Microsoft Windows 7 Professional 32bit Microsoft Windows 7 Professional 64 bit 32bit Windows XP (SP3) 32bit		
	Hard disk	Hitachi HDP725025GLA380 (250GB) 7200RPM, SATA3.0Gb/s *1pcs WDC WD3200AAJS (320GB) 7200RPM, SATA3.0Gb/s *1pcs		
	POWER SUPPLY	Great Wall BTX-400SEL-P4 ( ATX12V 2.31 / 300W)		

### PC 2 配置:

Testing	Motherboard Model name	ASUS P8P67Deluxe	Chipset	Intel P67 Chipset
	BIOS Version	V1502		
PC 2	CPU	Intel® Core (TM) i3-2100 CPU @3.10GHz	Memory	Kingston DDR3 1333MHz, 2GB
	OS	Microsoft Windows 7 Professional 32bit		
	Hard disk	Seagate ST3250318AS (250GB) 7200RPM, SATA3.0Gb/s *1pcs		
	POWER SUPPLY	Great Wall BTX-400SEL-P4 ( ATX12V 2.31 / 300W)		

### 测试软件:

Testing software	速率测试软件	HD Tach V3.0.1.0 ; HD Tune 4.60 - Hard Disk Utility; CrystalDiskmark .3.0		
	S.M.A.R.T 测试软件	HD Tune 4.60 - Hard Disk Utility; CrystalDiskInfo4.0.0 Dev4		
	文件复制软件	Fast copy Ver2.06	烧机测试软件	BurnInTest V6.0 Pro

### 测试硬盘:

HDD 编号	厂牌	型号	容量	规格	备注
HD-001	Seagate	ST9500325AS	500GB	5400RPM 2.5" SATA I HDD	
HD-002	Hitachi	HTS725050A9A364	500GB	7200RPM 2.5" SATA II HDD	
HD-003	Hitachi	HTS543216L9A300	160GB	5400RPM 2.5" SATA II HDD	
HD-004	Samsung	HM500JI	500GB	5400RPM 2.5" SATA II HDD	
HD-005	Intel	SSDSA2M040G2GC	40GB	2.5" SATA II SSD	
HD-006	Crucial	M4SSD	64GB	2.5" SATA III SSD	
HD-007	Western Digital	WD20EARS	2000GB	7200RPM 3.5" SATA II HDD	
HD-008	Western Digital	WD10EARS	1000GB	7200RPM 3.5" SATA II HDD	
HD-009	Western Digital	WD2002FAEX	2000GB	7200RPM 3.5" SATAIII HDD	
HD-010	Seagate	ST31000528AS	1000GB	7200RPM 3.5" SATA II HDD	
HD-011	Seagate	ST31500341AS	1500GB	7200RPM 3.5" SATA II HDD	
HD-012	Seagate	ST32000641AS	2000GB	7200RPM 3.5" SATAIII HDD	
HD-013	Maxtor	6L080M0	80GB	3.5" SATA I HDD	

### 测试产品

Testing	# 1	MB971SP-B	PCB 200206 REV: 1.0
Product	# 2	MB971SP-B	PCB 200206 REV: 1.0

Engineering Director:

Engineer:



## 1. 电子功能测试

### 1.1 开关功能测试

Test Switch	HDD1		HDD2		Result
	ON	Off	ON	Off	
Power switch	Pass	Pass	Pass	Pass	Pass

### 1.2 灯号显示功能测试

测试电脑: PC2	测试硬盘: HD-010 (HDD1)、HD-002 (HDD2)	测试样品: #1、#2
-----------	-----------------------------------	-------------

#### 测试结果

#### I. 工作状态:

Interface		HDD1	HDD2	Result
LED				
Power LED (浅绿灯)	恒亮	亮	亮	Pass
Activity LED (橙灯)	动作闪烁	闪	闪	Pass

#### II. 颜色、亮度检查:

Interface	LED	颜色		亮度		Result
		Power LED (浅绿灯)	Activity LED (橙灯)	Power LED (浅绿灯)	Activity LED (橙灯)	
HDD 1		正常	偏红	正常	偏红	Pass
HDD 2		正常	偏红	正常	偏红	Pass

### 1.3 Hot swap 功能测试

测试电脑: PC2	测试硬盘: HD-010 (HDD1)、HD-002 (HDD2)	测试样品: #1、#2
-----------	-----------------------------------	-------------

#### 测试结果

Interface	Test Result	Host	Device	Result
HDD 1		Pass	Pass	Pass
HDD 2		Pass	Pass	Pass

### 1.4 S.M.A.R.T 功能测试

测试电脑: PC2	测试硬盘: HD-010 (HDD1)、HD-002 (HDD2)	测试样品: #1、#2
测试软件: CrystalDiskInfo4.0.0Dev4		

#### 测试结果

Interface	Test Software	Result
	CrystalDiskInfo4.0.0Dev4	
HDD 1		Pass
HDD 2		Pass
注: 测试截图请见附件第 10 页		

Engineering Director:

Engineer:

## 1.5 传输测试

测试电脑: PC2	测试硬盘: HD-010 (HDD1)、HD-002 (HDD2)	测试样品: #1
测试软件: BurnInTest V6.0 Pro		时间: 48H

### 测试结果

<i>Data</i> <i>Interface</i>	ERR	Result
HDD 1	0	Pass
HDD 2	0	Pass

## 1.6 SATA II 速率测试

测试电脑: PC2	测试硬盘: HD-010 (HDD1)、HD-002 (HDD2)	测试样品: #1 ; #2
测试软件: HD Tach V3.0.1.0 ; CrystalDiskmark.3.0		

### 测试结果:

Test Result Test	HD Tach (3.0.1.0)		CrystaIDiskmark.3.0		UNIT	Result
	Burst Speed	Average read	Read (Seq)	Write (Seq)		
HD-010 BOT	223.3	105.7	131.6	130.6	MB/Sec	Pass
HDD 1	223.9	106.1	132.3	130.3	MB/Sec	Pass
HD-002 BOT	226.1	83.0	105.8	102.9	MB/Sec	Pass
HDD 2	214.8	82.9	105.8	102.3	MB/Sec	Pass

注: SATA II 速率测试截图请见附件第 11 页

## 1.7 SATA III 速率测试

测试电脑: PC2	测试硬盘: HD-009 (HDD1)、HD-006 (HDD2)	测试样品: #1 ; #2
测试软件: HD Tach V3.0.1.0、CrystaIDiskmark.3.0		

### 测试结果

Test Result Interface	HD Tach (3.0.1.0)		CrystaIDiskmark.3.0		UNIT	Result
	Burst Speed	Average read	Read (Seq)	Write (Seq)		
HD-009 BOT	405.5	125.9	157.3	150.2	MB/Sec	Pass
HDD 1	404.3	126.2	157.0	150.3	MB/Sec	Pass
HD-006 BOT	447.2	376.4	407.9	111.6	MB/Sec	Pass
HDD 2	450.2	377.5	411.6	110.9	MB/Sec	Pass

注: SATA III 速率测试截图请见附件第 12 页

## 1.8 电子负载测试

测试仪器: 电子负载仪、交换式电源供应器 E6496HG0788	测试样品: #2	测试时间: 48H
----------------------------------	----------	-----------

### 测试结果

POWER	TEST	HDD1	HDD2	Result
+5V/1.5A		1.5A	1.5A	Pass
		4.81V	4.81V	
+12V/2.0A		2.0A	---	Pass
		11.79V	---	

Engineering Director:

Engineer:

## 1.9 Sleep 功能测试

测试电脑: PC1	测试硬盘: HD-010 (HDD1)、HD-002 (HDD2)	测试样品: #1 ; #2
OS: Windows 7 32Bit; Windows 7 64Bit; Windows XP (SP3) 32Bit		

### 测试结果

Test	Interface	SATA	Result
	HDD 1		Pass
HDD 2		Pass	Pass

## 1.10 大容量资料拷贝测试

测试电脑: PC 2	测试硬盘: HD-010 (HDD1)、HD-002 (HDD2)	测试样品: #1 ; #2
测试软件: Fast copy Ver2.06	资料大小: 100GB DVD File	

### 测试结果

Interface	Data	Err	Result
	BOT		0
HDD 1		0	Pass
HDD 2		0	Pass

注: 测试截图请见附件第 13~14 页

## 1.11 硬盘相容性测试

测试电脑: PC1、PC 2	测试样品: #1、#2	测试软件: BurnInTest V6.0 Pro
----------------	-------------	---------------------------

Host:  USB2.0  e-SATA  SATA

HDD 编号	厂牌	容量	型号	判定	备注
HD-001	Seagate	ST9500325AS	500GB	Pass	
HD-002	Hitachi	HTS725050A9A364	500GB	Pass	
HD-003	Hitachi	HTS543216L9A300	160GB	Pass	
HD-004	Samsung	HM500JI	500GB	Pass	
HD-005	Intel	SSDSA2M040G2GC	40GB	Pass	
HD-006	Crucial	M4SSD	64GB	Pass	
HD-007	Western Digital	WD20EARS	2000GB	Pass	
HD-008	Western Digital	WD10EARS	1000GB	Pass	
HD-009	Western Digital	WD2002FAEX	2000GB	Pass	
HD-010	Seagate	ST31000528AS	1000GB	Pass	
HD-011	Seagate	ST31500341AS	1500GB	Pass	
HD-012	Seagate	ST32000641AS	2000GB	Pass	
HD-013	Maxtor	6L080M0	80GB	Pass	

Engineering Director:

Engineer:

## 1.12 操作系统兼容性测试

测试电脑: PC1、PC 2	测试硬盘: HD-010 (HDD1)、HD-002 (HDD2)	测试样品: #1、#2
测试软件: BurnInTest V6.0 Pro		资料大小: 100GB DVD File

测试结果:

OS \ Result	Detect	Capacity	Format	100GB File Copy	BurnInTest	Result
Windows 7 32Bit	Pass	Pass	Pass	Pass	Pass	Pass
Windows 7 64Bit	Pass	Pass	Pass	Pass	Pass	Pass
Windows XP (SP3) 32Bit	Pass	Pass	Pass	Pass	Pass	Pass

## 1.13 OVER 3TB/2TB 测试

测试电脑: PC1	测试样品: #1、#2
测试硬盘: ST32000641AS *1PCS ; WD30EZRS 3000GB *1PCS HSD723030ALA640 3000GB *1PCS	

测试结果

Test \ Interface	SATA	Result	备注
HDD1	Pass	Pass	HDD2 放置的是 2.5 寸硬盘, 没有超过 2TB 的 2.5 寸硬盘故 Skip
HDD2	Skip	Pass	

Windows XP 32 位目前最高容量仅支持到 2TB 硬盘, 因此若使用的硬盘超过 2TB, 系统无法正常显示。

## 2.机械性能测试

### 2.1 外观、结构检查

项次	检查项目	记录	结果	备注
1	本体	① 材质检查: OK; ② 喷漆附着力: OK; ③ 无明显变形、裂痕、碰划伤、脱漆、色差、毛刺、斑点、流痕, 棱角或边缘部位无卡手现象和刮手的凸起物; ④. 本体防刮面板颜色和周围结构件一致;	Pass	
2	前面板设计	电源开关按钮、推出按钮	Pass	
3	后背接口设计	全包 SATA 7Pin 公座、SATA 15Pin	Pass	
4	丝印	丝印正确完整, 清晰完好	Pass	
5	螺丝	①. 螺丝颜色和周围结构件一致; ②. 螺丝孔没有漏打、滑牙现象, 外露螺钉头没有损伤、露白的现象; 没有螺钉头穿透、螺钉过孔的现象;	Pass	

Engineering Director:

Engineer:

## 2.2 外形尺寸测量

样品	长 (mm)	宽 (mm)	高 (mm)	结果	备注
# 1	176.5	146.5	42.0	Pass	
# 2	177.1	147.0	41.5	Pass	

## 2.3 导光柱的导光性验证

样品	Power LED (绿光)	Activity LED (橙光)	结果	备注
# 1	Pass	Pass	Pass	
# 2	Pass	Pass	Pass	

## 2.4 硬盘与机箱安装验证

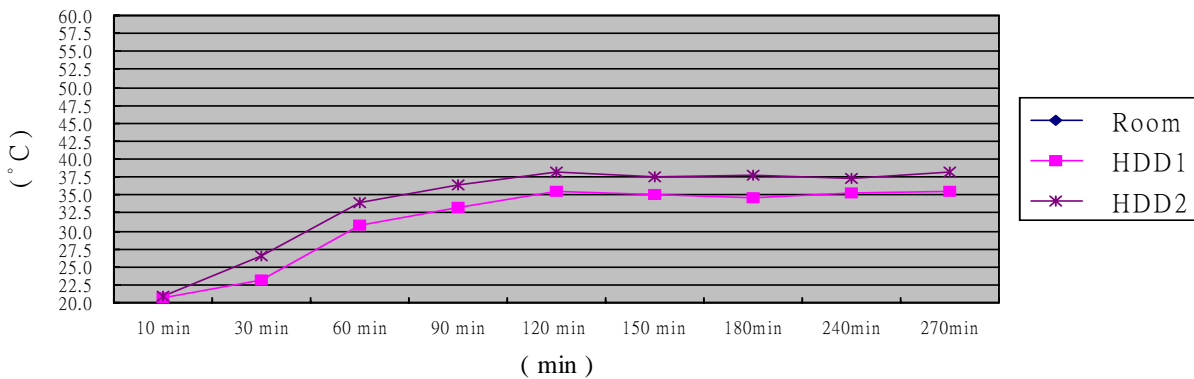
样品	3.5" & 2.5" 硬盘	标准机箱	结果	备注
# 1	Pass	Pass	Pass	
# 2	Pass	Pass	Pass	

## 2.5 外壳接地验证

样品	接地	结果	备注
# 1	Pass	Pass	
# 2	Pass	Pass	

## 2.6 温升测试

测试仪器: PC1、温度计	测试硬盘: HD-010 (HDD1)、HD-002 (HDD2)	测试样品: #1							
测试软件: BurnInTest V6.0 Pro									
Temperature Test									
Test Time	30 min	60 min	90 min	120 min	150 min	180 min	210min	240min	270min
Room	15.5	15.5	15.5	16.1	16.1	16.0	16.0	16.1	16.0
HDD1	20.7	23.2	30.8	33.3	35.6	35.0	34.7	35.3	35.5
HDD2	20.9	26.5	34.0	36.3	38.3	37.5	37.7	37.4	38.1



温升曲线图

Engineering Director:

Engineer:

### 3.环境特性测试

#### 3.1 高温工作测试

测试电脑: PC 1	测试硬盘: HD-010 (HDD1)、HD-002 (HDD2)	测试样品: #1
测试软件: BurnInTest V6.0 Pro		
仪器: 高低温交变湿热实验箱	温度设定: 45°C	运行时间: 8H

测试结果:

<i>Interface</i> / <i>Data</i>	ERR	Result
HDD 1	0	Pass
HDD 2	0	Pass

#### 3.2 低温工作测试

测试电脑: PC 1	测试硬盘: HD-010 (HDD1)、HD-002 (HDD2)	测试样品: #1
测试软件: BurnInTest V6.0 Pro		
仪器: 高低温交变湿热实验箱	温度设定: -10°C	运行时间: 8H

测试结果:

<i>Interface</i> / <i>Data</i>	ERR	Result
HDD 1	0	Pass
HDD 2	0	Pass

### 4. 附件

#### 4.1 灯号显示图片



Power LED 发光效果图



Activity LED 发光效果图

#### 4.2 S.M.A.R.T 功能测试截图

ID	Attribute Name	Current	Next	Threshold	Raw Values
01	Read Error Rate	114	99	0	0000470428
03	Spin-Up Time	94	94	0	0000000000
04	Start/Stop Count	99	99	20	0000000093
05	Reallocated Sectors Count	100	100	36	0000000000
07	Seek Error Rate	75	60	30	00010040B18
09	Power-On Hours	100	100	0	00000000273
0A	Spin Retry Count	100	100	87	0000000000
0C	Power Cycle Count	100	100	20	00000000283
0F	Badblks	93	93	0	00000000007
10	Reallocated Error	100	100	99	00000000000
1B	Reported Uncorrectable Errors	100	100	0	00000000000
1C	Command Timeout	100	81	0	00000000000
1D	High Fly Writes	100	100	0	00000000000
1E	Air/Elev Temperature	81	45	45	00001313013
1F	Temperature	19	95	0	00110000013
C1	Hardware ECC Recovered	40	24	0	00000470428
C5	Current Pending Sector Count	100	100	0	00000000000
C6	Uncorrectable Sector Count	100	100	0	00000000000
C7	UltraDMA CRC Error Count	200	190	0	00000000004
F0	Head Flying Hours	100	253	0	01F4000098C
F1	Vendor Specific	100	253	0	000042F3B81
F2	Vendor Specific	100	253	0	000020A0054

HDD1 (3.5 inch HDD)

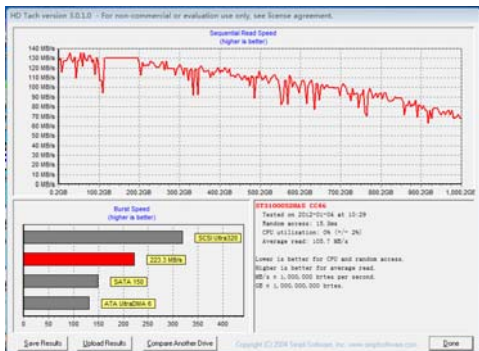
ID	Attribute Name	Current	Next	Threshold	Raw Values
01	Read Error Rate	100	100	62	00000000000
02	Throughput Performance	100	100	40	00000000000
03	Spin-Up Time	253	253	23	001A0000002
04	Start/Stop Count	100	100	0	00000000000
05	Reallocated Sectors Count	100	100	5	00000000000
07	Seek Error Rate	100	100	87	00000000000
09	Power-On Hours	100	100	40	00000000000
0A	Spin Retry Count	99	99	0	00000000041
0C	Power Cycle Count	100	100	60	00000000000
0F	Badblks	100	100	0	00000000001
1B	Reported Uncorrectable Errors	100	100	0	00000000000
1C	Command Timeout	99	99	0	00000000000
1D	High Fly Writes	100	100	0	00000000000
1E	Air/Elev Temperature	196	196	0	003FFF8000C
1F	Temperature	28	95	0	00000000007
C1	Load/Unload Cycle Count	100	100	0	00000000498
C5	Current Pending Sector Count	100	100	0	00000000000
C6	Uncorrectable Sector Count	100	100	0	00000000000
C7	UltraDMA CRC Error Count	200	200	0	00000000007
F0	Head Flying Hours	100	100	0	00000000000
F1	Vendor Specific	100	100	0	00000000000
F2	Vendor Specific	100	100	0	00000000000

HDD2 (2.5 inch HDD)

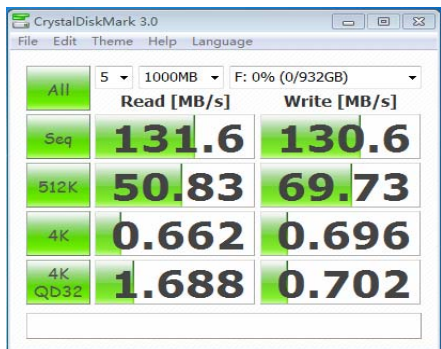
Engineering Director:

Engineer:

4.3 SATA II 速率测试截图



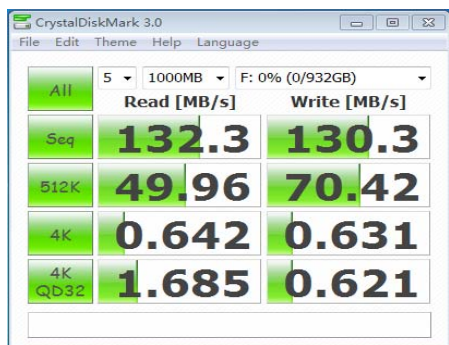
HD Tach (3.0.1.0) Test - HDD1-BOT



CrystalDiskmark.3.0 Test -HDD1-BOT



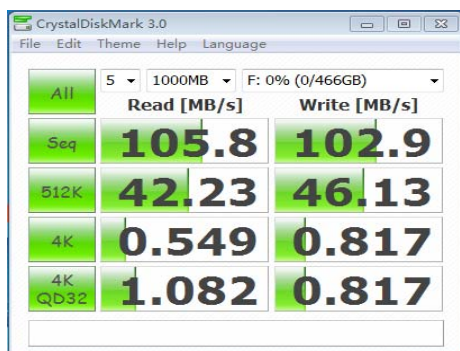
HD Tach (3.0.1.0) Test - HDD 1



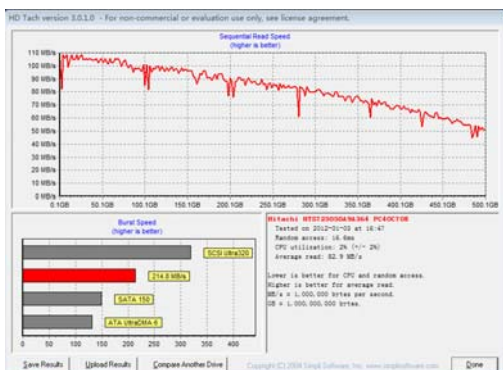
CrystalDiskmark.3.0 Test - HDD1



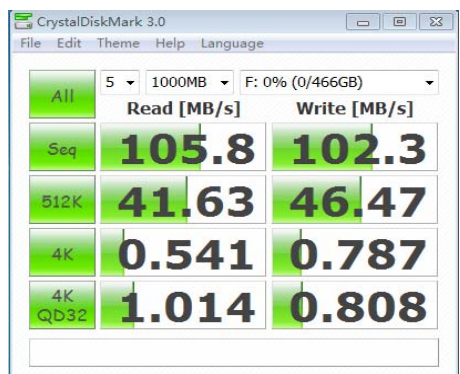
HD Tach (3.0.1.0) Test - HDD2-BOT



CrystalDiskmark.3.0 Test - HDD2-BOT



HD Tach (3.0.1.0) Test - HDD2

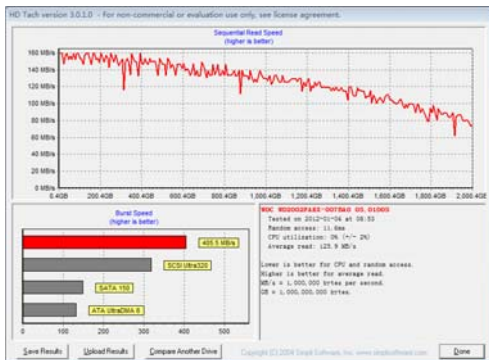


CrystalDiskmark.3.0 Test -HDD2

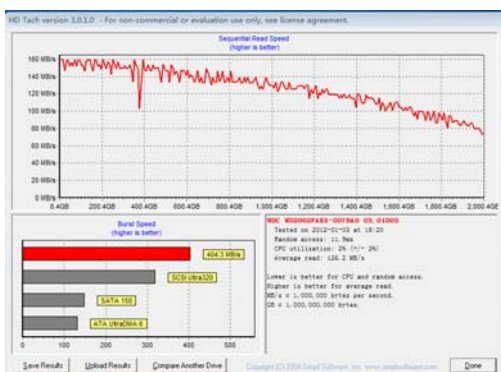
Engineering Director:

Engineer:

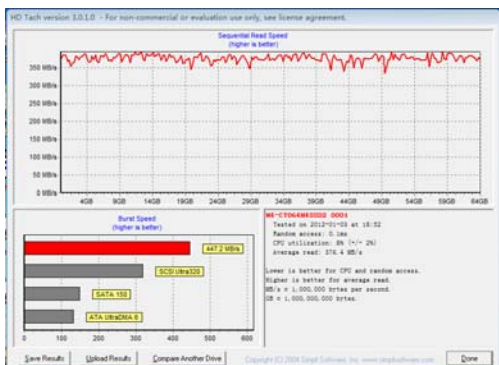
4.4 SATAIII 速率测试截图



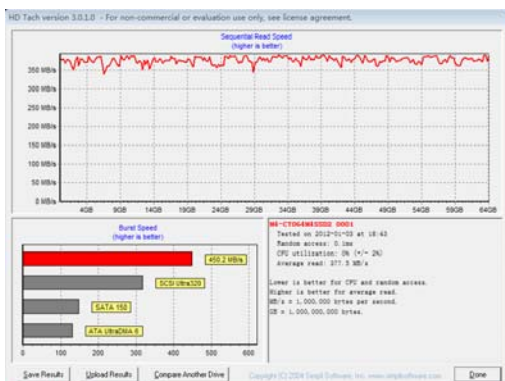
HD Tach (3.0.1.0) Test- HDD1-BOT



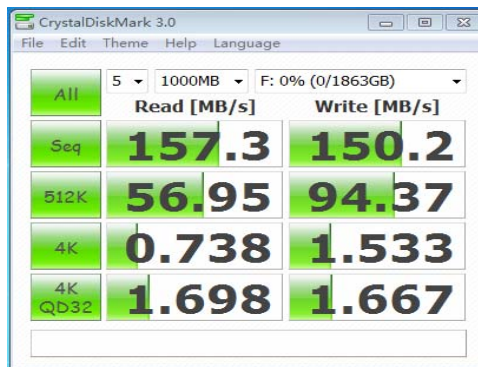
HD Tach (3.0.1.0) Test- HDD1



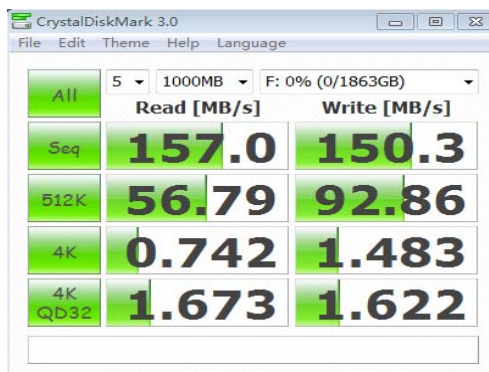
HD Tach (3.0.1.0) Test-HDD- BOT



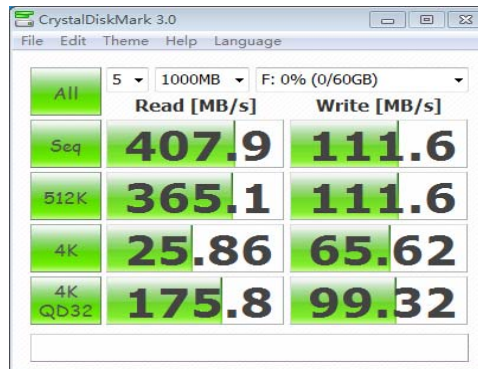
HD Tach (3.0.1.0) Test- HDD2



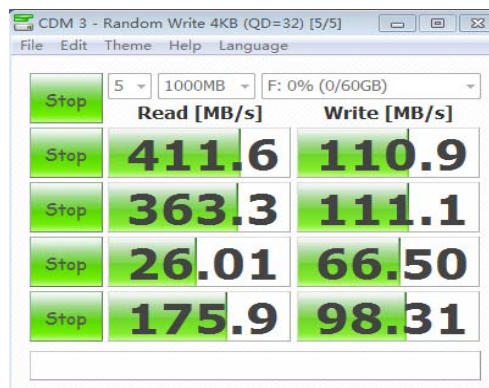
CrystalDiskmark.3.0 Test -HDD1-BOT



CrystalDiskmark.3.0 Test -HDD1



CrystalDiskmark.3.0 Test -HDD- BOT



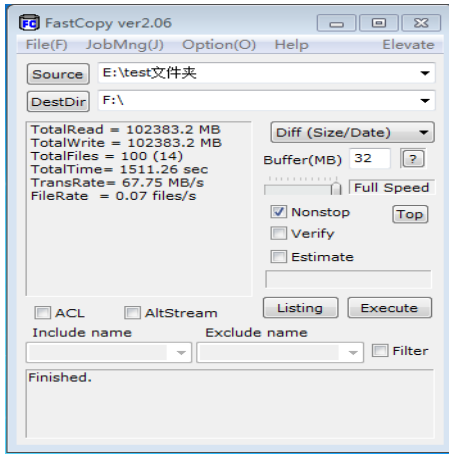
CrystalDiskmark.3.0 Test - HDD2

Engineering Director:

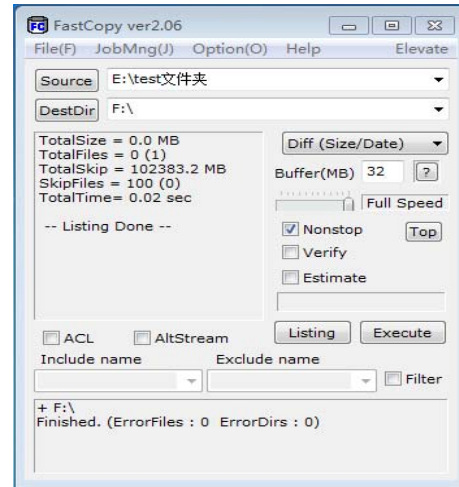
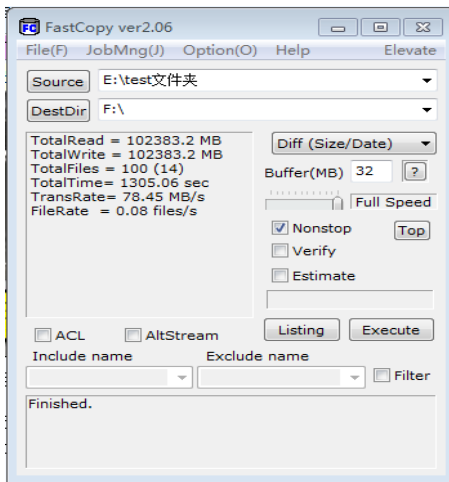
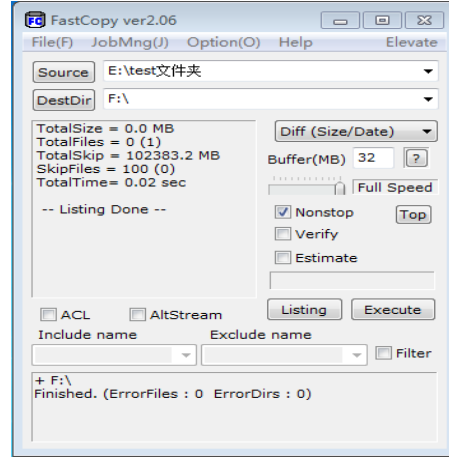
Engineer:



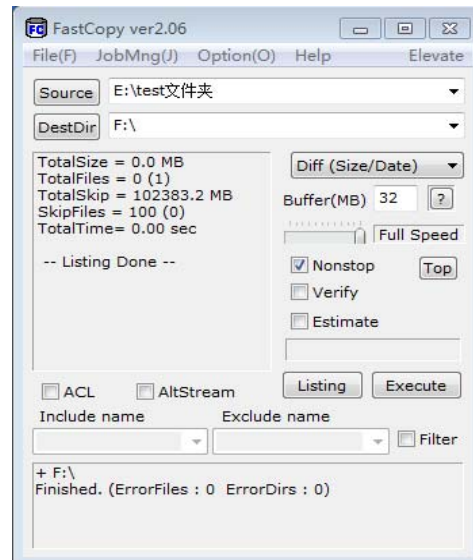
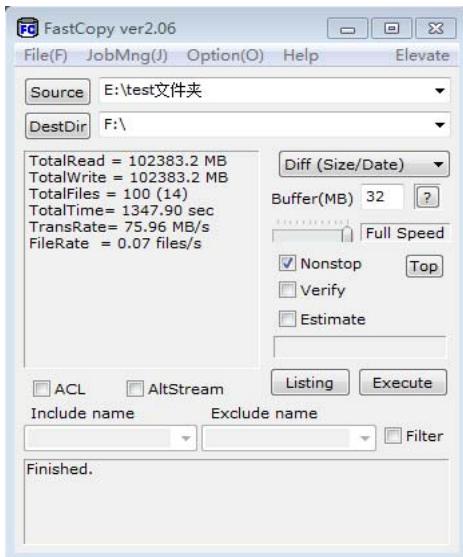
4.5 大容量资料拷贝测试截图



HDD1 Fast Copy Ver2.06-BOT



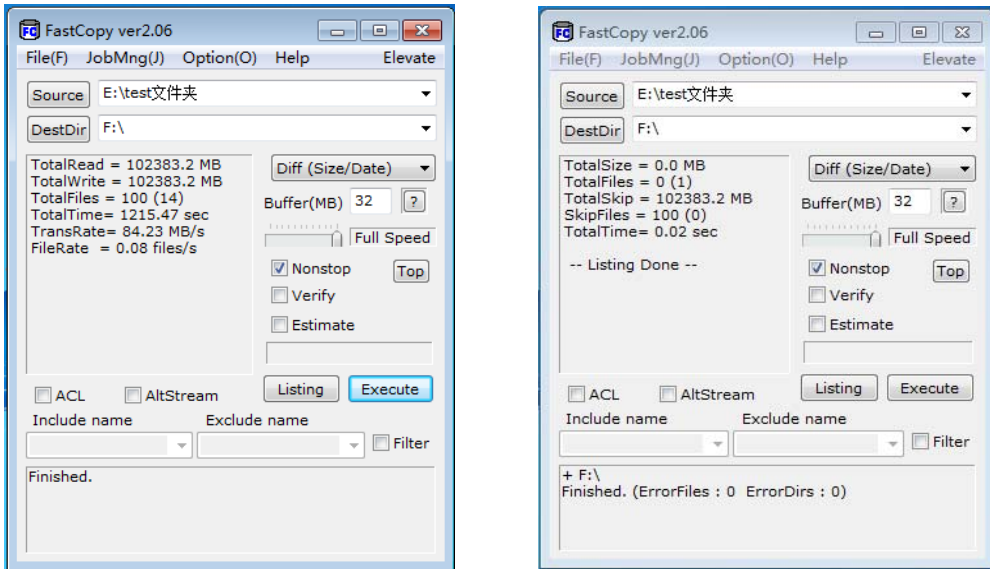
Fast Copy Ver2.06-HDD1



HDD2 Fast Copy Ver2.06-BOT

Engineering Director:

Engineer:



Fast Copy Ver2.06-HDD2

4.6 产品实装图片



机箱安装后效果图

Engineering Director:

Engineer:

# Certificate of Test

**WE HEREBY CERTIFY THAT:**

*Certificate No.: R10091601E*

*CREMAX TECH. CO., LTD*

*2FL, No. 18 , Lane 609, Sec. 5, Chung Hsin Rd., San Chung City, Taipei County, Taiwan,*

*R.O.C.*

*Screw-less Hard Drive Mobile Rack*

*MB971SP-B*

*MB971SP-B-1, XX971SP-B, XX971SP-B-1*

*AND KEEPS ALL REQUIREMENTS ACCORDING TO THE FOLLOWING REGULATIONS*

*Test Standards:*

*EN55022:2006+A1:2007: Class B*

*EN55024:1998+A1:2001+A2:2003*

*IEC61000-4-2:2008*

*IEC61000-4-3:2006+A1:2007*

*IEC61000-4-8:2009*

*IS IN COMPLIANCE WITH THE EUROPEAN COUNCIL DIRECTIVE 2004/108/EC  
WITHIN CE MARKING REQUIREMENT.*

*Name of Laboratory : Matrix Test Laboratory*

*Site Location : 2F, No.146, Jian Yi Rd., Chung-Ho City, Taipei Hsien, Taiwan, R.O.C.*

*Issue Date : Sep. 29, 2010*

*Approved by :*



*/ Managing Director*

*This certification shall not be reproduced without the written approval of the laboratory.  
The certification is valid only in accordance with the test report No. R10091601E . The confirmation is valid only  
if the product is manufactured in accordance with the test report.*