

Getting Started

The EVM ships with a Power On Self Test (POST) flashed on the board. The POST automatically executes when the board is powered ON. POST performs memory test and internal EMAC loopback test. At power ON, the user LEDs are OFF by default. The LEDs blink and turn OFF to indicate successful DSP booting.

After booting, User LED-1 turns ON to indicate successful RAM test and User LED-2 turns ON to indicate successful internal EMAC loop-back test. These LEDs remain ON to indicate success of both the tests.

Please refer to the EVM User Guide for software installation and other details.

Important Notes when handling the EVM

- Plug in all the cables before powering ON the EVM to ensure proper grounding.
- Do not unnecessarily flex the boards, while inserting cables. Excessive flexing can break the PCB traces.
- Use proper ESD procedures when handling the EVM.
- Warning: Some components on the EVM may be too hot to touch with your bare hand when power is on.

Online Documentation

- TMS320TCI6614 processor website
<http://focus.ti.com/docs/prod/folders/print/tms320TCI6614.html>
- Please contact TI for SC-MCSDK Updates
- CCS v5
http://processors.wiki.ti.com/index.php/Category:Code_Composer_Studio_v5

C6614 EVM Information:

<http://www.advantech.com/Support/TI-EVM/default.aspx>

This link contains

- Hardware & Software details
- User Guide
- Technical Reference Manual
- TMS320TCI6614 Datasheet

C6614 EVM Support:

Please write to
EVM667support@advantech.com.tw for technical queries related to this EVM.

Advantech Address:

Advantech Co., Ltd.
No. 1, Alley 20, Lane 26, Rueiguang Rd., Neihu Dist., Taipei 114, Taiwan, R. O. C.
Toll Free: 0800-777-111
Phone: 886-2-2792-7818
<http://www.advantech.com/>

TI Worldwide Technical Support

Internet

TI Semiconductor Product Information Center Home Page
support.ti.com
TI Semiconductor KnowledgeBase Home page
support.ti.com/sc/knowledgebase

Product Information Centers

Americas

Phone +1 (972) 644-5580 Fax +1 (972) 927-6377
Internet/Email support.ti.com/sc/pic/americas.htm

Europe, Middle East and Africa

Phone

European Free Call	00800-ASK-TEXAS (00800 275 83927)
International	+49 (0) 8161 80 2121
Russian Support	+7 495 981 0701

Note: The European Free Call (Toll Free) number is not active in all countries. If you have technical difficulty calling the free call number, please use the international number above.

Fax	+(49) (0) 8161 80 2045
Internet	support.ti.com/sc/pic/euro.htm

Japan

Fax

International	+81-3-3344-5317
Domestic	0120-81-0036
Internet/Email	
International	support.ti.com/sc/pic/japan.htm
Domestic	www.tij.co.jp/pic

Asia

Phone

International	+91-80-413816651-		
Domestic	Toll-Free-Number	Toll-Free-Number	
Australia	800-999-084	Malaysia	1-800-80-3973
China	800-820-8682	New Zealand	0800-446-934
Hong Kong	800-96-5941	Philippines	1-800-765-7404
India	1-800-425-7888	Singapore	800-886-1028
Indonesia	001-803-8861-1006	Taiwan	0800-006800
Korea	080-551-2804	Thailand	001-800-886-0010

Fax +886-2-2378-6808

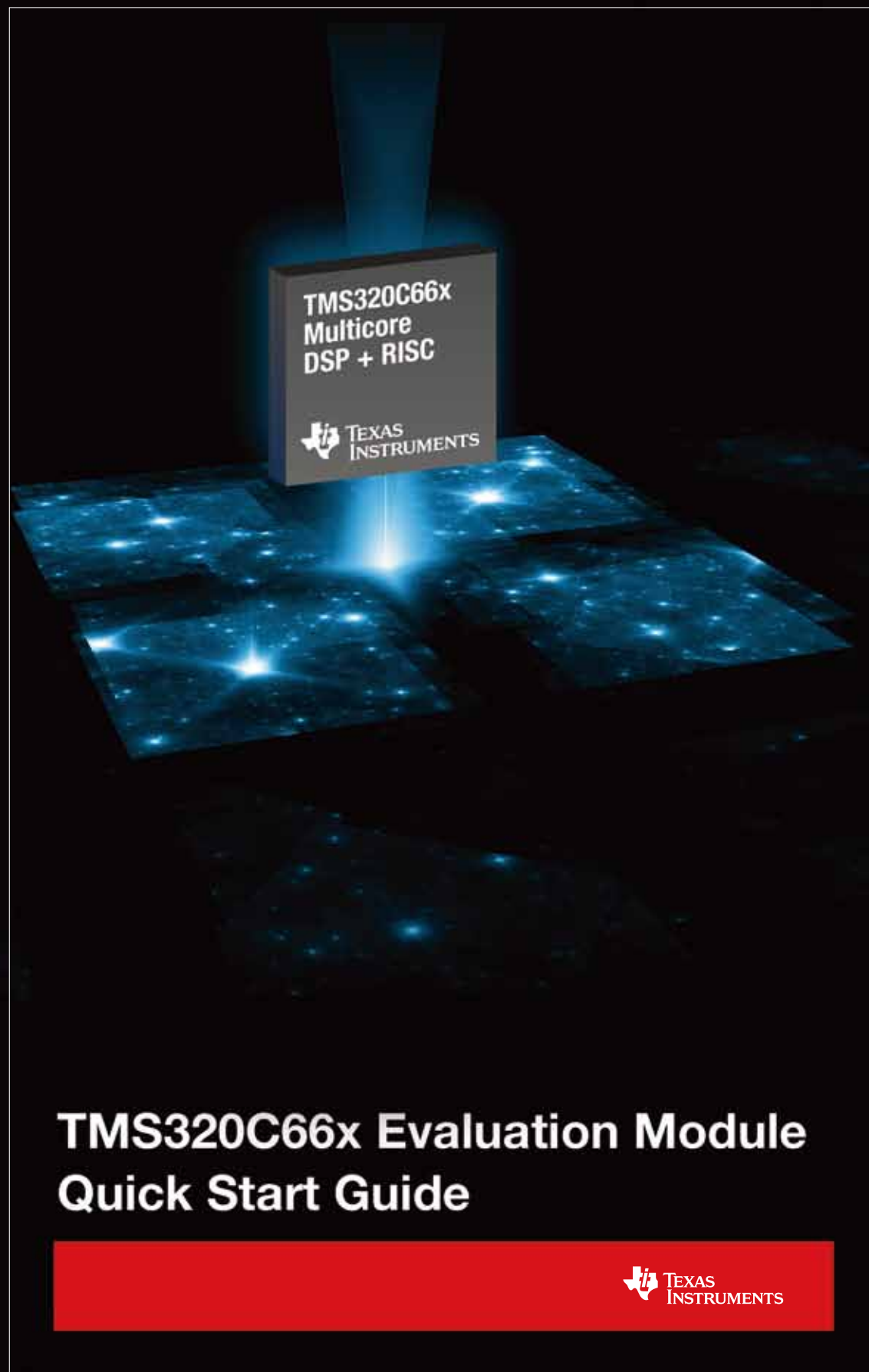
Email tiasia@ti.com

ti-china@ti.com

Internet support.ti.com/sc/pic/asia.htm

Important Notice: The products and services of Texas Instruments Incorporated and its subsidiaries described herein are sold subject to TI's standard terms and conditions of sale. Customers are advised to obtain the most current and complete information about TI products and services before placing orders. TI assumes no liability for applications assistance, customer's applications or product designs, software performance, or infringement of patents. The publication of information regarding any other company's products or services does not constitute TI's approval, warranty or endorsement thereof.

The floating bar is a trademark of Texas Instruments.
All other trademarks are the property of their respective owners

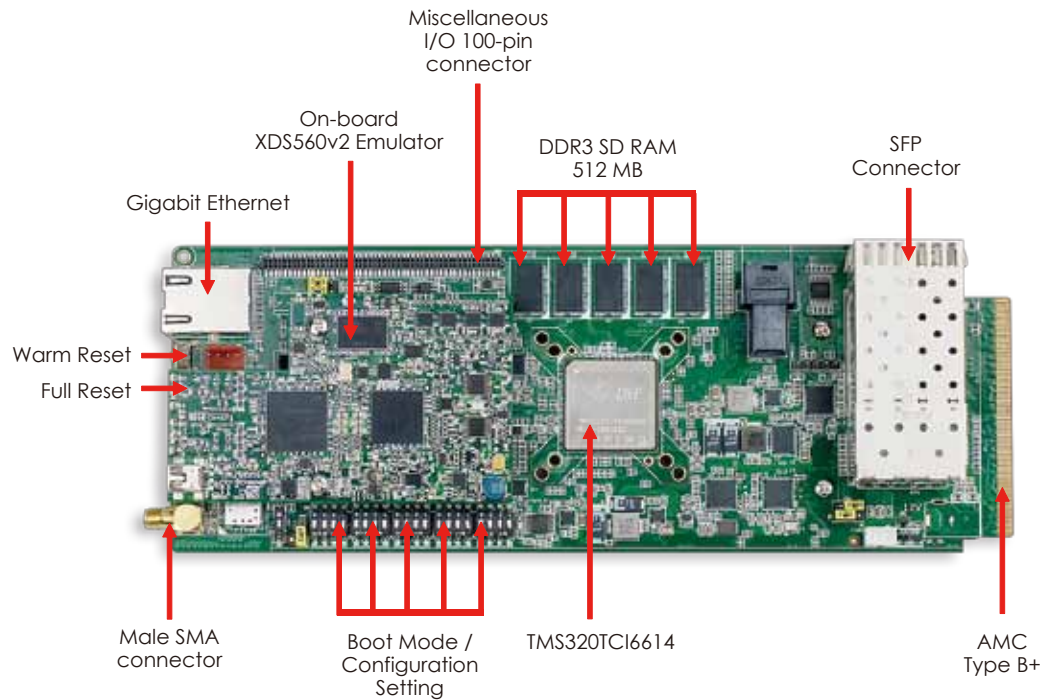


TMS320C66x Evaluation Module Quick Start Guide



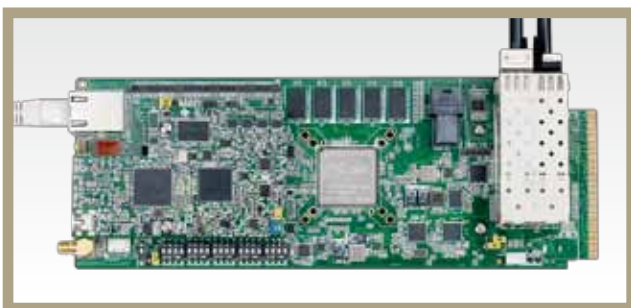
TMDXEVM6614LXE

TMS320TCI6614 Evaluation Module



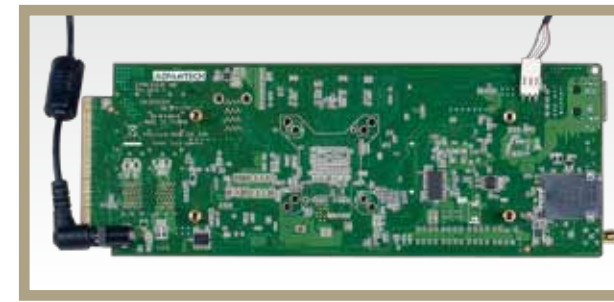
The TMDXEVM6614LXE (Evaluation Module) kit includes:

- TMX320TCI6614 Evaluation Module
- On-board XDS560v2 Emulator
- Power adapter and power cord
- USB cable for Mezzanine JTAG emulation (XDS560v2)
- Ethernet cable
- RS-232 serial cable
- International power adapter
- Software (DVD) and documentation

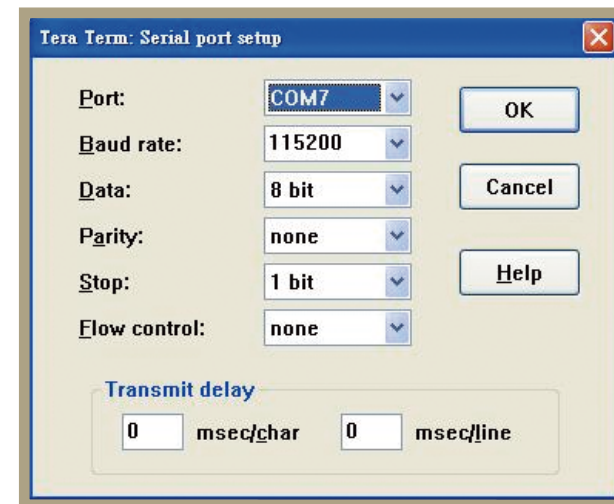
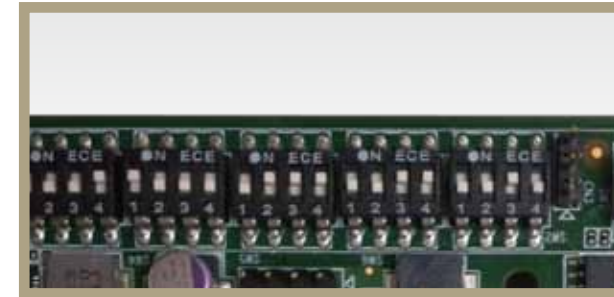


1

Connect the Ethernet cable to Ethernet port and 12V DC power adapter to power jack (on the bottom side of EVM).

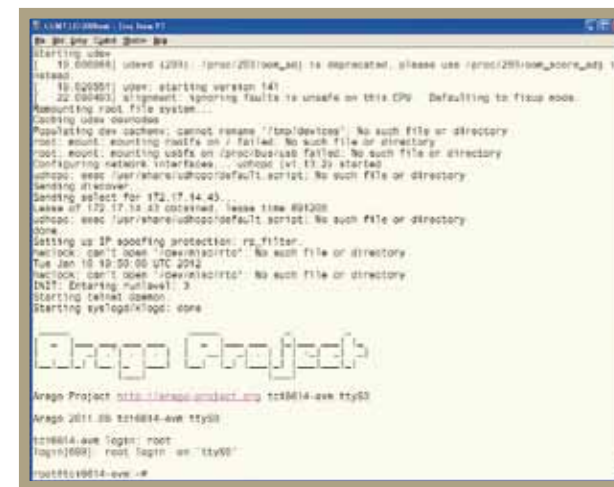


Ensure EVM configuration switch (SW3, SW4 and SW5) are set as shown by default



2

Open HyperTerminal, select COM port, and configure settings.



3

Note:

1. Follow the READ_ME_FIRST instructions for installing tools, SC-MCSDK and demos on your PC.
2. Refer to the Getting Started Guide under SC-MCSDK for details on boot configurations.