

Getting Started

The EVM ships with a Power On Self Test (POST) flashed into I2C EEPROM. The POST automatically executes when the board is powered ON. POST performs memory test and internal EMAC loopback test. At power ON, the user LEDs are OFF by default. The LEDs blink and turn OFF to indicate successful DSP booting.

After booting, User LED-1 turns ON to indicate successful RAM test and User LED-2 turns ON to indicate successful internal EMAC loop-back test. These LEDs remain ON to indicate success of both the tests.

Please refer to the EVM User Guide for software installation and other details

Important Notes when handling the EVM

- Plug in all the cables before powering ON the EVM to ensure proper grounding.
- Do not unnecessarily flex the boards, while inserting cables. Excessive flexing can break the PCB traces.
- Use proper ESD procedures when handling the EVM.
- Warning: Some components on the EVM may be too hot to touch with your bare hand when power is on.

Online Documentation

- TMS320C6670 processor website
<http://focus.ti.com/docs/prod/folders/print/tms320c6670.html>
- TMS320C6678 processor website
<http://focus.ti.com/docs/prod/folders/print/tms320c6678.html>
- MCSDK website for updates
<http://focus.ti.com/docs/toolsw/folders/print/bioslinuxmcsdk.html>
- CCS v5
http://processors.wiki.ti.com/index.php/Category:Code_Composer_Studio_v5

C6678 EVM Information:

<http://www.advantech.com/Support/TI-EVM/default.aspx>

This link contains

- Hardware & Software details
- User Guide
- Technical Reference Manual
- TMS320C6678 Datasheet

C6678 EVM Support:

Please write to EVM667xsupport@advantech.com.tw for technical queries related to this EVM.

Advantech Address:

Advantech Co., Ltd.
No. 1, Alley 20, Lane 26, Rueiguang Rd., Neihu Dist., Taipei 114, Taiwan, R. O. C.
Toll Free: 0800-777-111
Phone: 886-2-2792-7818
<http://www.advantech.com/>

©2011 Texas Instruments Incorporated

TI Worldwide Technical Support

Internet

TI Semiconductor Product Information Center Home Page
support.ti.com
TI Semiconductor KnowledgeBase Home page
support.ti.com/sc/knowledgebase

Product Information Centers

Americas

Phone +1 (972) 644-5580 Fax +1 (972) 927-6377
Internet/Email support.ti.com/sc/pic/americas.htm

Europe, Middle East and Africa

Phone
European Free Call 00800-ASK-TEXAS
(00800 275 83927)
International +49 (0) 8161 80 2121
Russian Support +7 495 981 0701

Note: The European Free Call (Toll Free) number is not active in all countries. If you have technical difficulty calling the free call number, please use the international number above.

Fax +(49) (0) 8161 80 2045
Internet support.ti.com/sc/pic/euro.htm

Japan

Fax
International +81-3-3344-5317
Domestic 0120-81-0036
Internet/Email
International support.ti.com/sc/pic/japan.htm
Domestic www.tij.co.jp/pic

Asia

Phone
International +91-80-413816651-
Domestic Toll-Free-Number Toll-Free-Number
Australia 800-999-084 Malaysia 1-800-80-3973
China 800-820-8682 New Zealand 0800-446-934
Hong Kong 800-96-5941 Philippines 1-800-765-7404
India 1-800-425-7888 Singapore 800-886-1028
Indonesia 001-803-8861-1006 Taiwan 0800-006800
Korea 080-551-2804 Thailand 001-800-886-0010

Fax +886-2-2378-6808
Email tiasia@ti.com
ti-china@ti.com
Internet support.ti.com/sc/pic/asia.htm

Important Notice: The products and services of Texas Instruments Incorporated and its subsidiaries described herein are sold subject to TI's standard terms and conditions of sale. Customers are advised to obtain the most current and complete information about TI products and services before placing orders. TI assumes no liability for applications assistance, customer's applications or product designs, software performance, or infringement of patents. The publication of information regarding any other company's products or services does not constitute TI's approval, warranty or endorsement thereof.

The floating bar is a trademark of Texas Instruments.
All other trademarks are the property of their respective owners

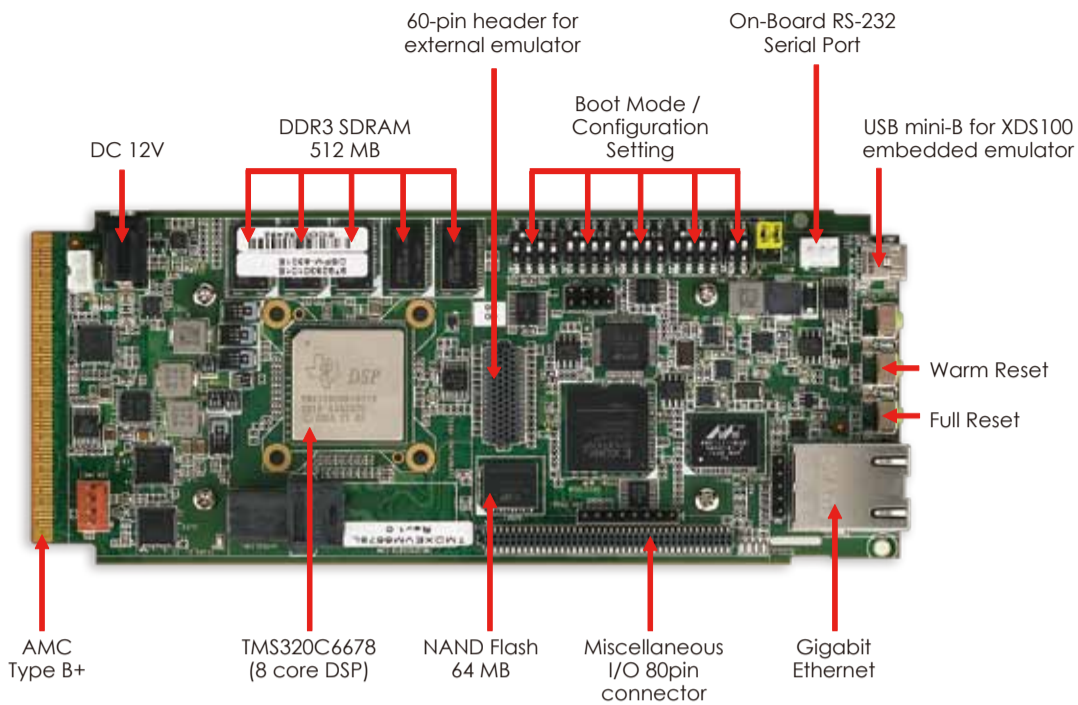


TMS320C66x Evaluation Module Quick Start Guide



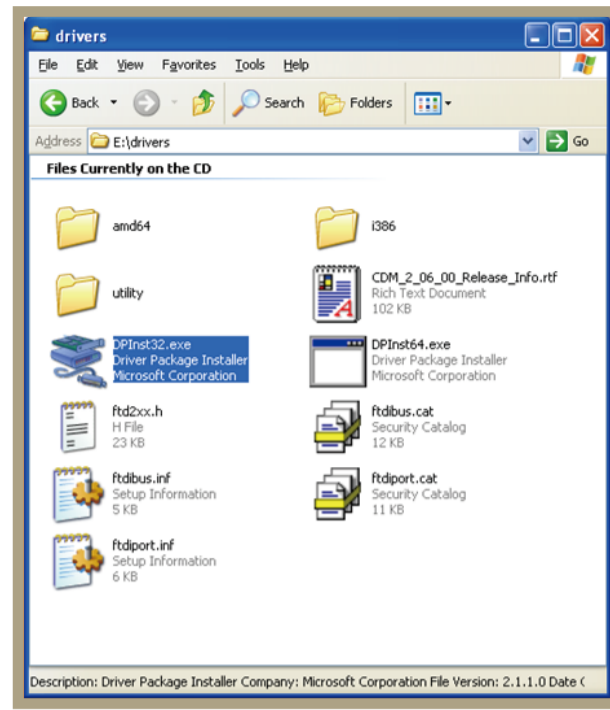
TMDSEVM6678L

TMS320C6678 Evaluation Module



The TMDSEVM6678L (Evaluation Module) kit includes:

- TMS320C6678 Evaluation Module
- Power adapter and power cord
- USB cable for on-board JTAG emulation (XDS100v1)
- Ethernet cable
- RS-232 serial cable
- Software (DVD) and documentation



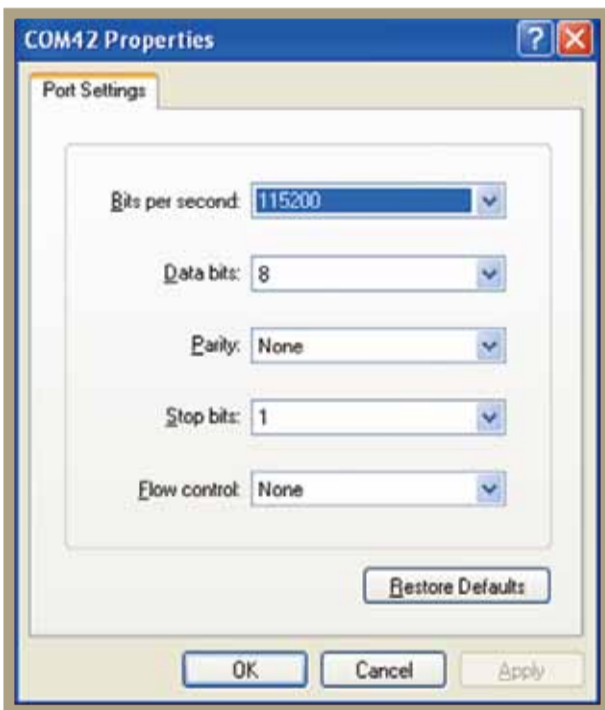
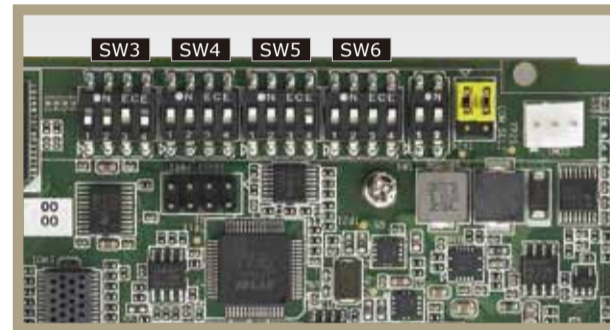
1

Insert the DVD and load the USB COM driver by executing the program \drivers\DPInst32.exe For 64-bit systems execute the program \drivers\DPInst64.exe



2

Connect the USB mini-B cable to USB1, Ethernet cable to Ethernet port (LAN1) and 12V DC power adapter to power jack. Ensure EVM configuration switch (SW3, SW4, SW5 and SW6) are set as shown.



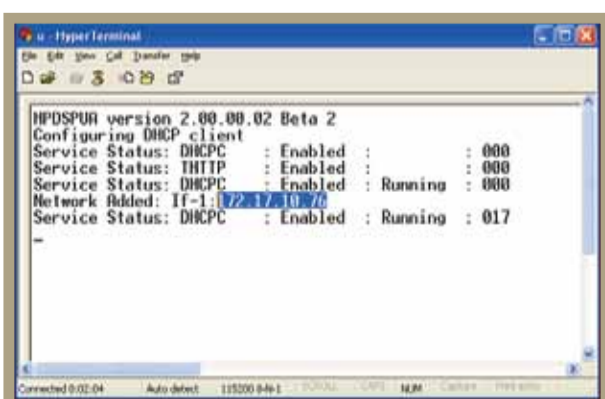
3

Open HyperTerminal, select COM port, configure settings.



5

Open the web browser, copy the IP address (172.17.10.76) from step 4 to the web browser.



4

Press the RESET_FULL button on the EVM.

Allow 40 seconds for the BIOS Out-Of-Box (OOB) Demo to complete booting.

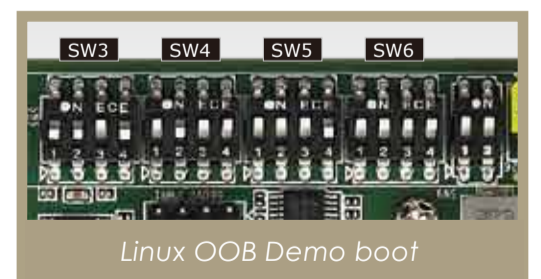
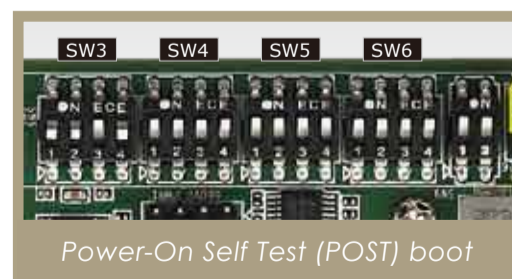
The demo acquires an IP address from server and displays it on console.

Copy the Network Added: Inf-1: IP address from HyperTerminal screen.

Note:

1. Additionally, this EVM has two boot modes settings, Power-On Self Test (POST) boot and Linux OOB Demo boot. The settings of the EVM configuration switches (SW3, SW4, SW5 and SW6) for power-on self test boot is shown as left figure and Linux OOB Demo boot is shown as right figure.

Press the RESET_FULL after changing switch settings and follow HyperTerminal and webpage settings in Step 4 and 5.



2. Follow the READ_ME_FIRST instructions for installing tools, MCSDK 2.0 and demos on your PC.

3. Refer to the Getting Started Guide under MCSDK for details on boot configurations.

4. Visit the following website for the latest MCSDK updates:
<http://focus.ti.com/docs/toolsw/folders/print/bioslinuxmcsdk.html>